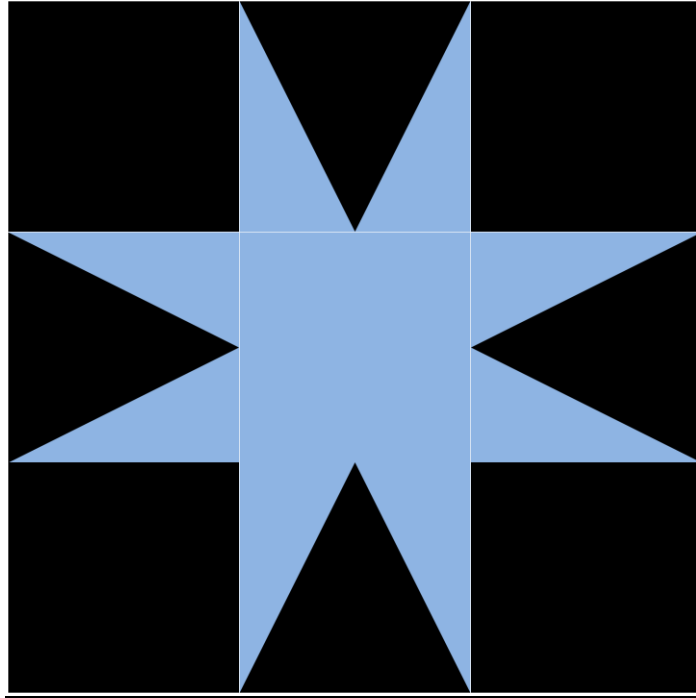


## 9. Galaxy Star



### Background

(8) 3 ½ inch squares

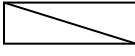
### Batik:

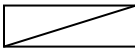
(1) 3 ½ inch square

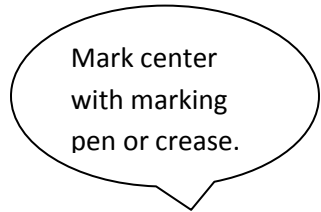
(8) 2 by 3 ½ inches rectangle

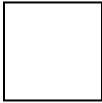
Constructing the triangle unit:

1. Draw a diagonal line on 2 by 3 ½ inch rectangle—

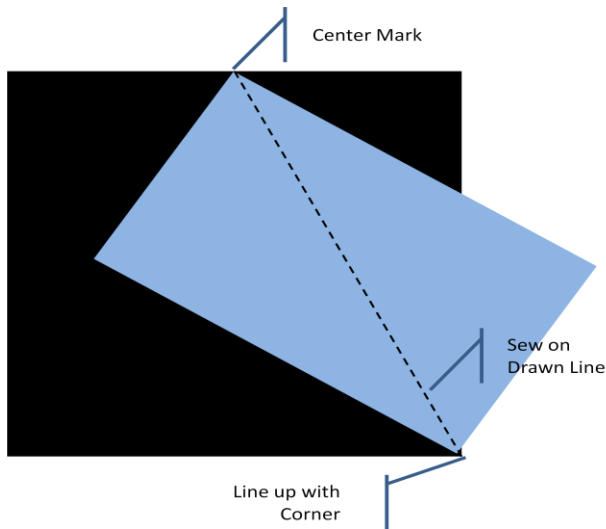
Four going one direction 

Four in reverse 

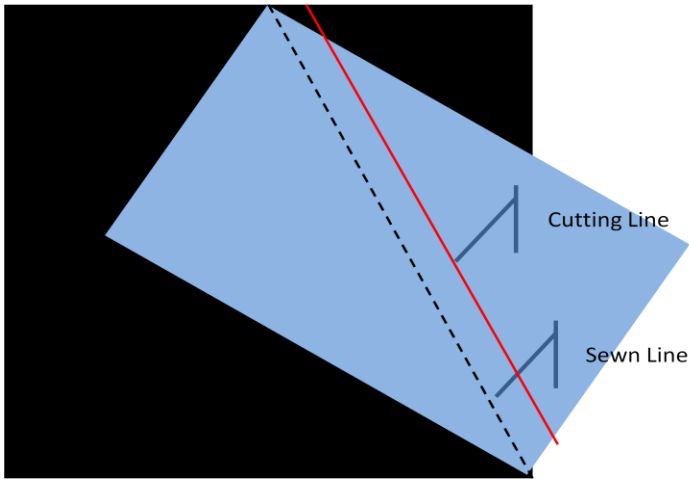


2. Find the center of the 3 ½ inch square of background and mark it: 

3. With right sides together, orient a 3 ½ inch by 2 inch rectangle like the following diagram, being careful to line up the drawn line with center mark and opposite corner:

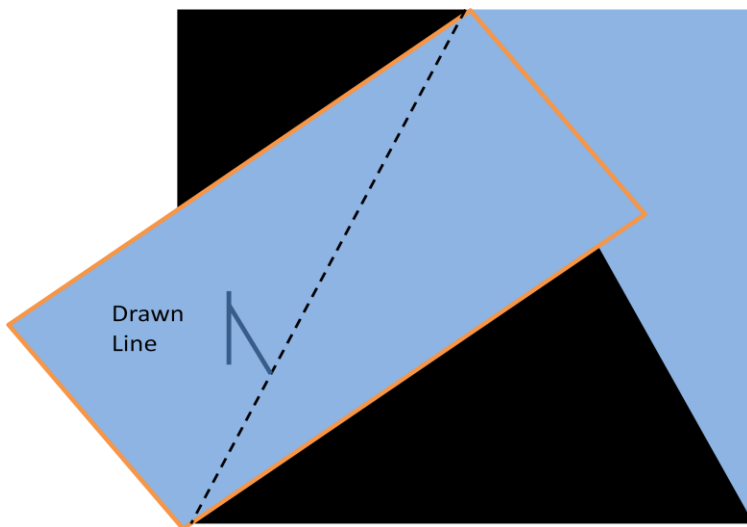


4. Sew on the line. Trim  $\frac{1}{4}$  inch from sewn line.

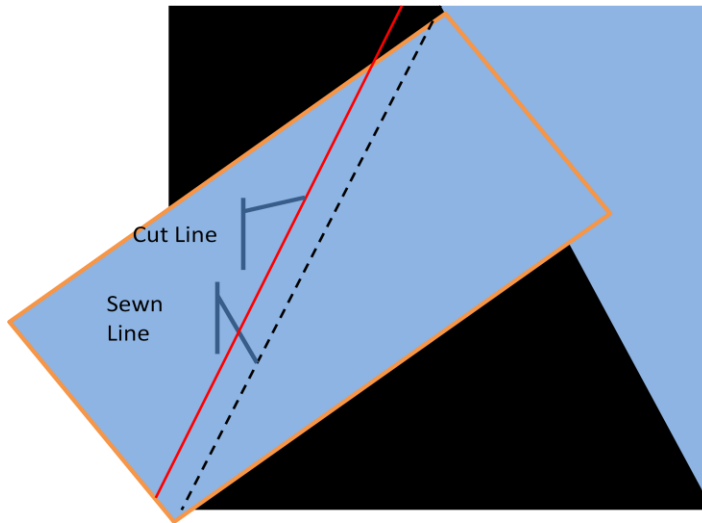


Press the triangle open.

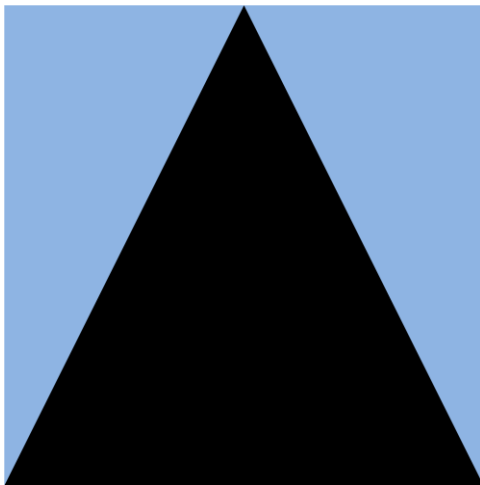
5. Next, using a  $3\frac{1}{2}$  inch by 2 inch rectangle drawn in reverse, place the rectangle on the square, matching the line to the center and the opposite corner:



Sew on the drawn line and trim  $\frac{1}{4}$  inch from the sewn line.



Press the triangle open.



Repeat Steps 1-5 to create four units.

Assemble block:

