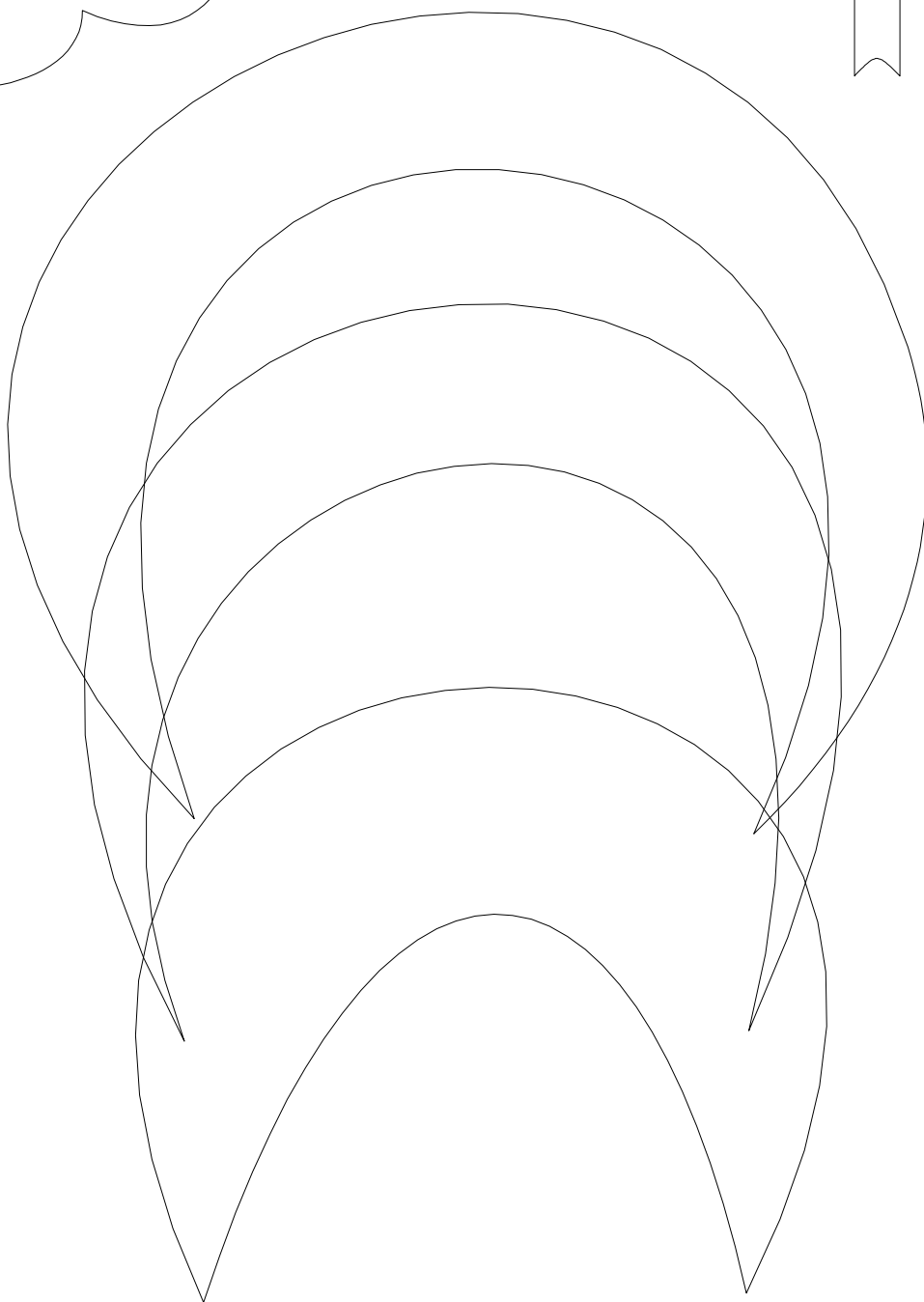
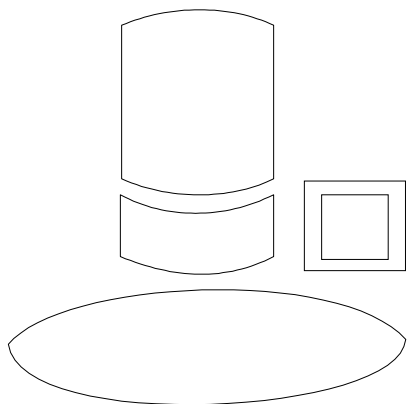
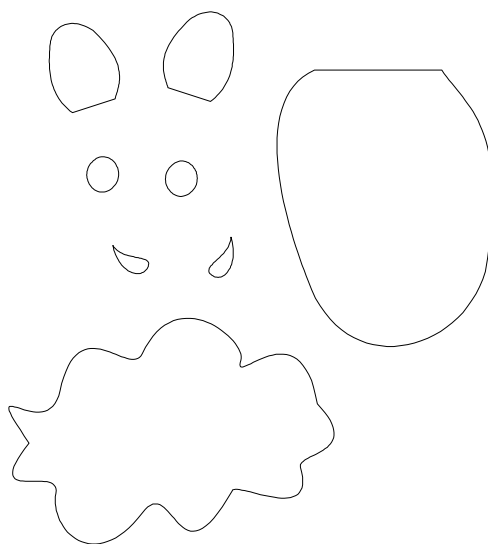
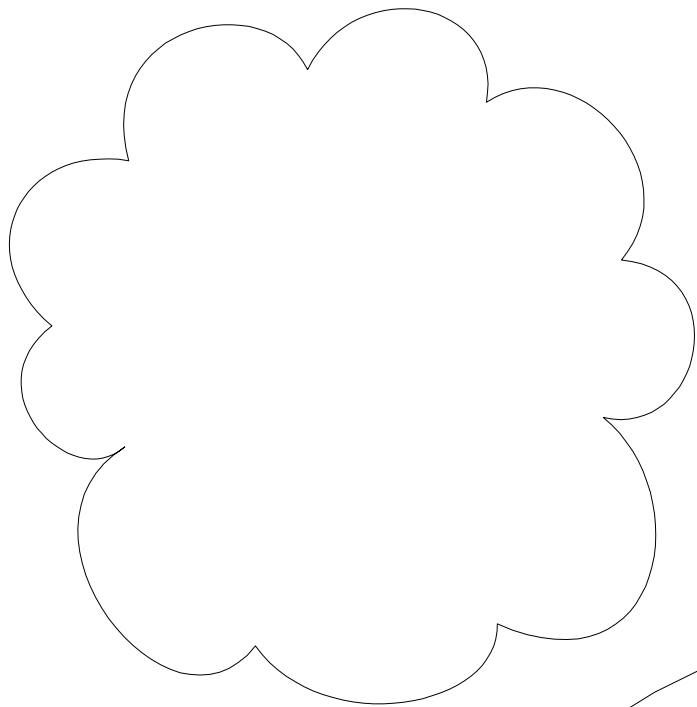


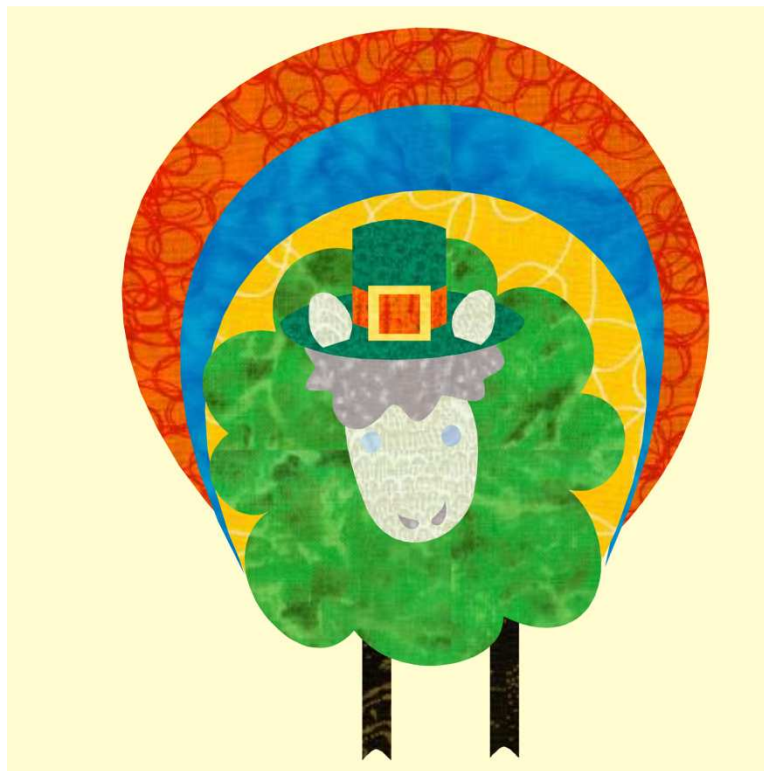
Lucky Charms to Ewe!!

Feel free to use your favorite method of appliqué! This project is designed to be quick and easy, so consider using fusible appliqué and substitute embellishments like embroidery and buttons for the smaller pieces. You may want to build the sheep, the hat and the rainbow separately, using a Teflon sheet, before the final assembly. Have fun and be sure to send pictures to me at Carole@ewesquilting.com.





Without the rainbow



With rainbow