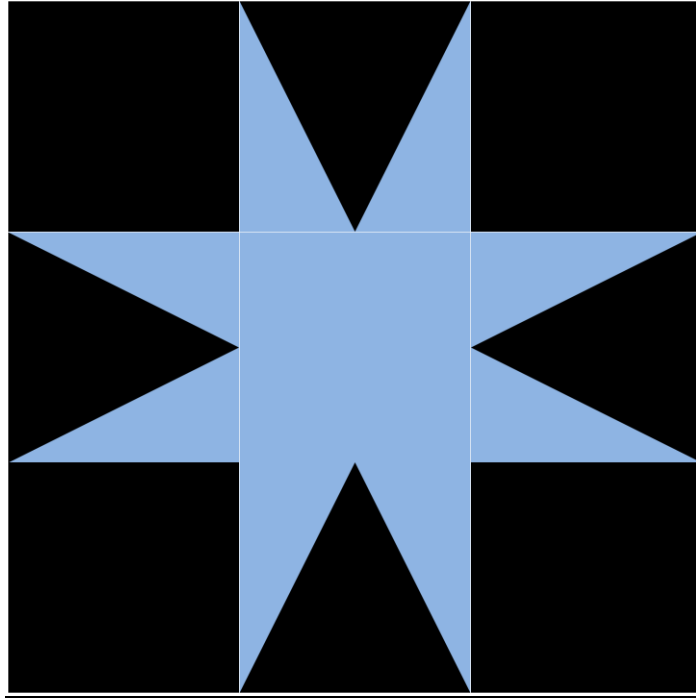


9. Galaxy Star



Background

(8) 3 ½ inch squares

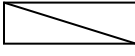
Batik:

(1) 3 ½ inch square

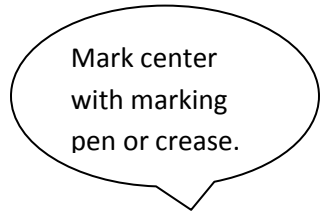
(8) 2 by 3 ½ inches rectangle

Constructing the triangle unit:

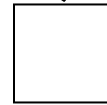
1. Draw a diagonal line on 2 by 3 ½ inch rectangle—

Four going one direction 

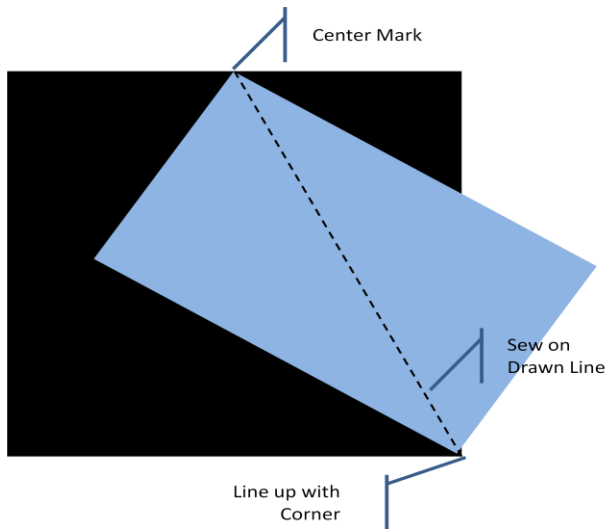
Four in reverse 



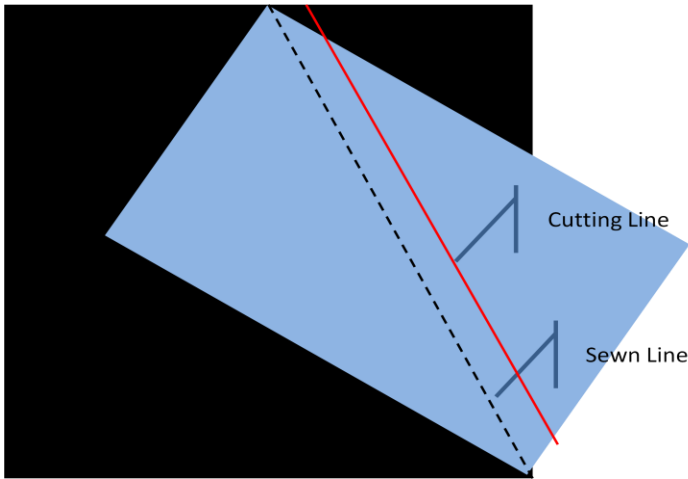
2. Find the center of the 3 ½ inch square of background and mark it:



3. With right sides together, orient a 3 ½ inch by 2 inch rectangle like the following diagram, being careful to line up the drawn line with center mark and opposite corner:

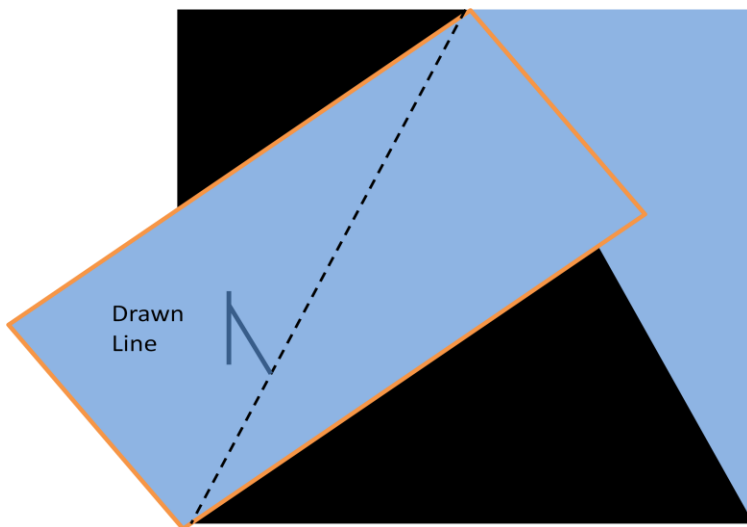


4. Sew on the line. Trim $\frac{1}{4}$ inch from sewn line.

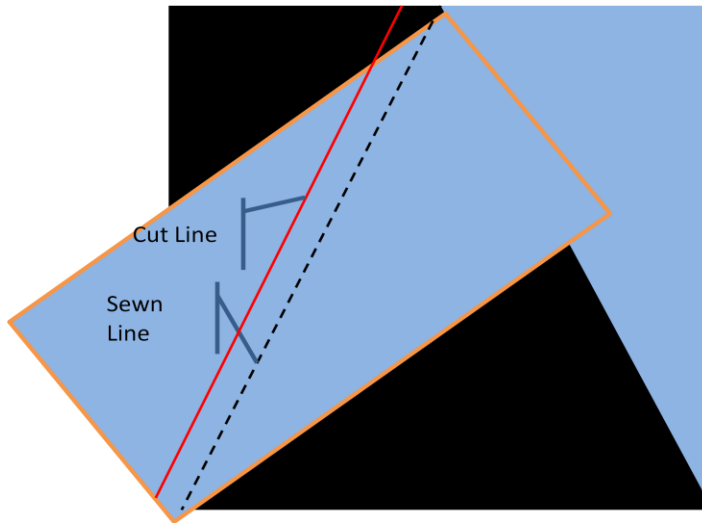


Press the triangle open.

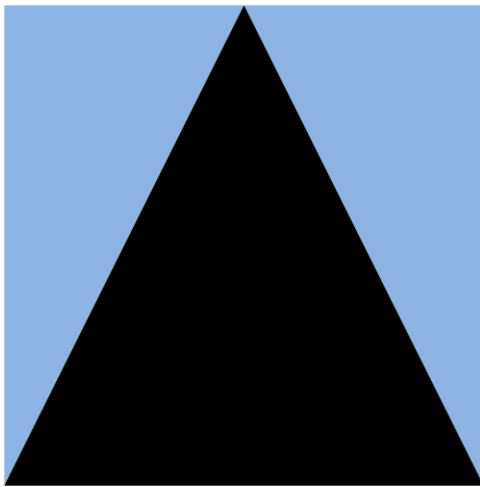
5. Next, using a $3\frac{1}{2}$ inch by 2 inch rectangle drawn in reverse, place the rectangle on the square, matching the line to the center and the opposite corner:



Sew on the drawn line and trim $\frac{1}{4}$ inch from the sewn line.



Press the triangle open.



Repeat Steps 1-5 to create four units.

Assemble block:

